



- ■ New approval for shooting ranges - patented
- ■

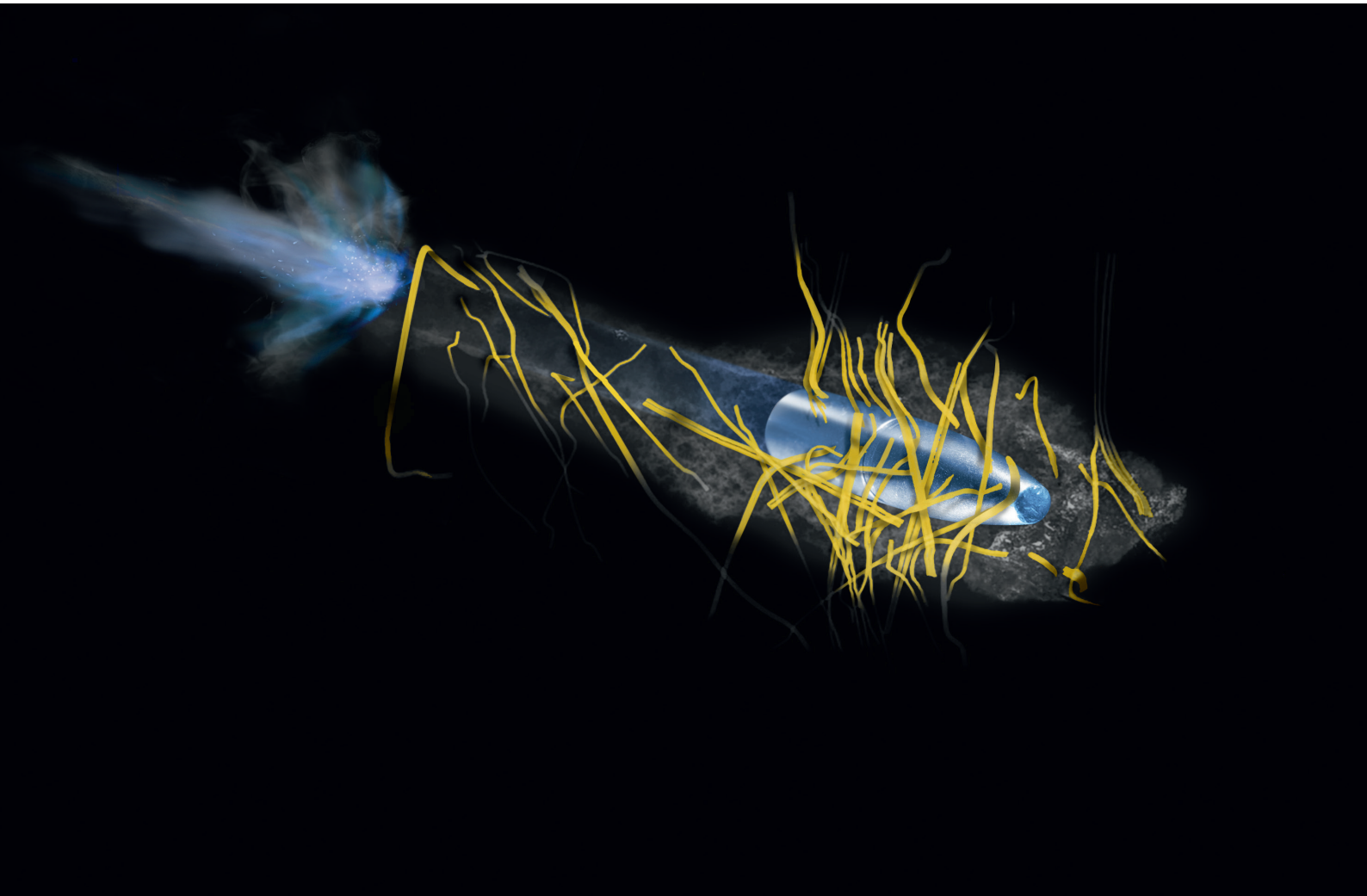
baLCon : baLlistic Concrete

Ballistic protection systems

baLCon is a newly developed concrete with excellent ballistic protection properties. Projectiles are slowed down and caught without splintering at short penetration depths in the baLCon elements. Even firing at an angle does not produce ricochets. baLCon elements considerably minimise the risk of dangerous transverse and backstrokes. An additional protection against rebound or an armouring is not necessary. The shape and dimensions of the

prefabricated baLCon elements can be adjusted to the project requirements. Furthermore, the baLCon elements can be easily combined with acoustic panels.

Ballistic protection systems with baLCon elements are cost-effective with highly improved protective characteristics compared to the solutions known so far.



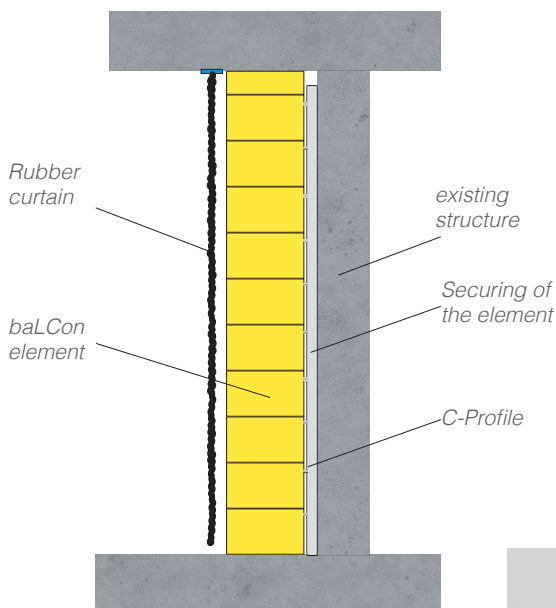
Applications

Bullet trap in the target area & ballistic protection walls

Ballistic protective walls made of baLCon elements are easy and quick to realise. They are suitable both in the target area and laterally along the firing axis. Missed shots and unintentionally fired shots are reliably absorbed without splinters. baLCon protective walls can be designed as a self-supported wall, as cladding for existing structures or with a mounting system.

New possibilities for short-distance and indoor shooting ranges

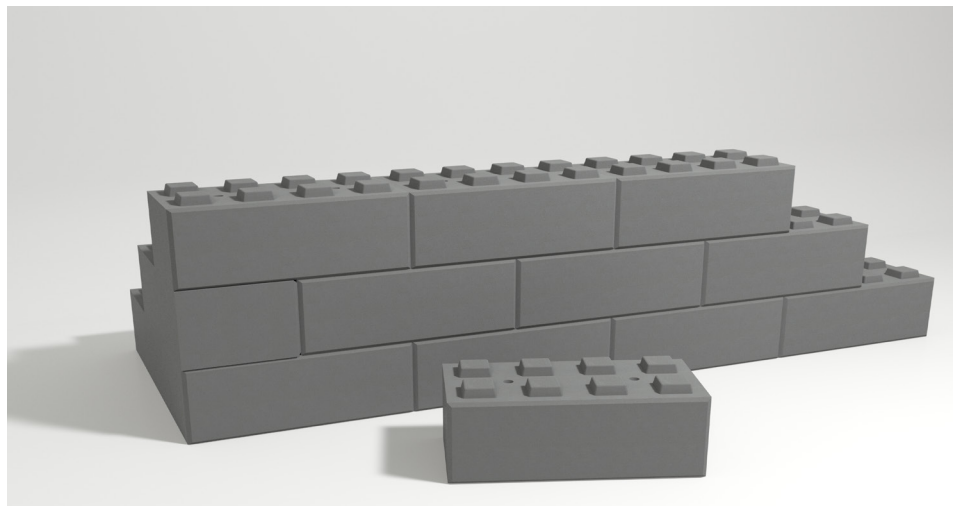
Safe and also cost-effective projects can be designed with the new, unique possibilities provided by baLCon elements for classic as well as 270° tacting shooting ranges. baLCon elements can be used for the cladding of walls or the division of rooms with little effort and with a high degree of flexibility. The baLCon elements are mounted either self-supported with the Lego principle or as a front-hung façade system with the possibility to easily replace the single elements in heavily used zones. A rubber curtain can be installed to catch possible splinters in regions with direct fire at close range.



baLCon wall of an indoor shooting range



Structure of a baLCon wall of an indoor shooting range

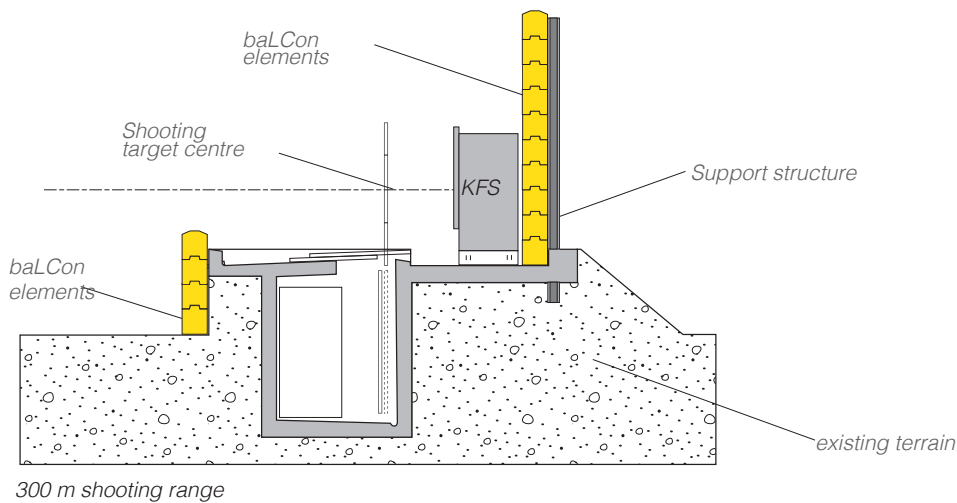
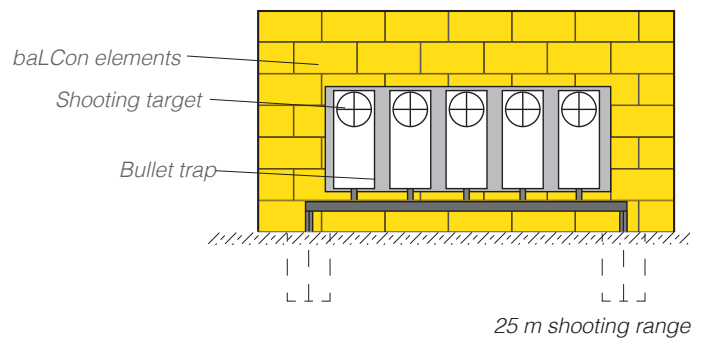
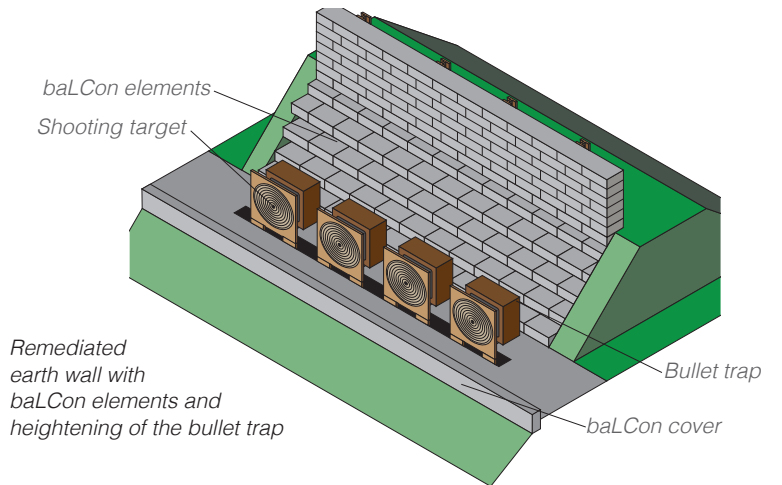


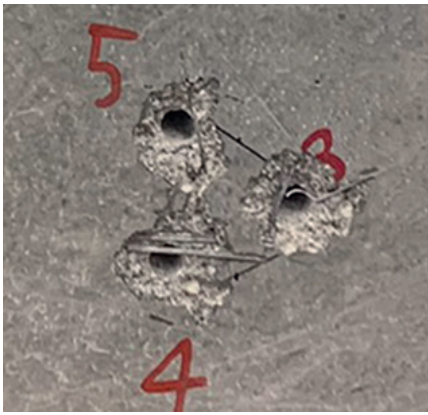
Structure of baLCon elements according to the Lego principle

Environmentally friendly refurbishment of outdoor shooting ranges

baLCon elements offer new, innovative solutions for the decontamination of bullet traps in outdoor shooting ranges. After the decontamination of the backfill, baLCon elements can be installed as bullet

traps. They prevent the re-contamination of the soil. The appearance of the shooting range is mostly preserved. It is also possible to heighten the bullet trap without enlarging the existing earth wall.





Approval

The baLCon elements (type A, thickness 300 mm) were tested in a certified Swiss laboratory. The requirement of the VPAM guideline PM was met with:

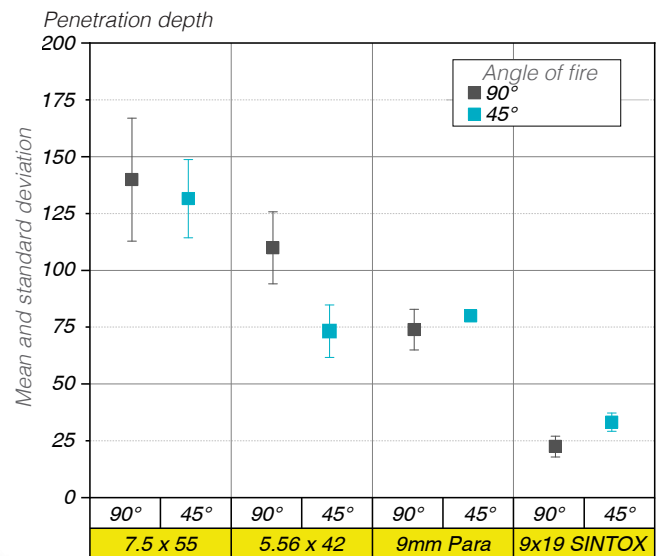
- 5.6 x 45 mm (GP 90),
- 7.5 x 55 mm (GP 11),
- 9 mm Para (Pist Pat 14)
- and 9 x 19 mm SINTOX (Action 4).

Easy handling

baLCon elements have a specific weight of approximately 1.05 t/m³ and are therefore comparatively light. The elements are equipped with transport anchors and, with a weight of about 50 kg for a 50 cm x 30 cm x 30 cm element, can be carried, laid or installed by 2 people in accordance with the usual work safety regulations



baLCon element type A, test according to VPAM; GP11 (7.5 x 55) 90° & 45°



Solexperts AG

Mettlenbachstrasse 25
8617 Mönchaltorf
Switzerland

Tel +41 (0)44 806 29 29
info@solexperts.com
www.solexperts.com

